

Wilkinson Rd between Carey Rd and Interurban Rd

February 24, 2020 To February 28, 2020



The data presented here is for information purposes only and should not be considered authoritative for construction, geotechnical, engineering, navigational, legal, or other site-specific uses. The information shared is owned by the Transportation Division of the Engineering Department at the District of Saanich. Accuracy is not guaranteed.

Start Date: 24-Feb-20
 Start Time: 0:01
 Station ID: M0041-03

Location 1: Wilkinson Rd between Carey Rd and Interurban Rd

Note:

DATE:	February 24, 2020		February 25, 2020		February 26, 2020		February 27, 2020		February 28, 2020		WK AVG		WK AVG	HOURLY
	MON		TUE		WED		THURS		FRI				CH 1+2	%
Time:	EB	WB	EB	WB	EB	WB	EB	WB	EB	WB	EB	WB		
12-1 AM	40	38	19	33	32	41	27	40			30	38	68	0.4%
1-2 AM	18	18	20	8	18	12	15	11			18	12	30	0.2%
2-3 AM	16	5	16	10	22	23	15	7			17	11	29	0.2%
3-4 AM	25	4	24	10	30	12	31	18			28	11	39	0.3%
4-5 AM	76	25	79	20	63	23	65	19			71	22	93	0.6%
5-6 AM	202	51	235	56	199	75	190	60			207	61	267	1.7%
6-7 AM	527	164	559	198	577	191	551	178			554	183	736	4.8%
7-8 AM	657	392	680	385	646	420	692	398			669	399	1068	7.0%
8-9 AM	675	467	692	427	739	497	690	438			699	457	1156	7.5%
9-10 AM	521	413	554	450	574	443	546	399			549	426	975	6.4%
10-11 AM	502	456	488	498	549	467	434	317			493	435	928	6.1%
11-12 PM	503	410	543	497	547	523	500	459			523	472	996	6.5%
12-1 PM	520	473	536	482	568	501	473	489			524	486	1011	6.6%
1-2 PM	523	502	546	457	553	538	537	514			540	503	1043	6.8%
2-3 PM	527	473	539	472	535	399	530	470			533	454	986	6.4%
3-4 PM	610	436	565	445	578	430	618	481			593	448	1041	6.8%
4-5 PM	521	471	553	486	536	438	529	470			535	466	1001	6.5%
5-6 PM	457	433	512	421	512	434	524	453			501	435	937	6.1%
6-7 PM	400	412	469	447	486	492	460	463			454	454	907	5.9%
7-8 PM	350	325	280	392	330	380	354	352			329	362	691	4.5%
8-9 PM	249	276	269	293	280	251	261	249			265	267	532	3.5%
9-10 PM	149	210	186	221	219	250	179	265			183	237	420	2.7%
10-11 PM	109	113	94	123	129	136	133	129			116	125	242	1.6%
11-12 AM	49	71	58	80	71	71	95	79			68	75	144	0.9%
LANES	8226	6638	8516	6911	8793	7047	8449	6758			8496	6839	15335	100.0%
TOTAL	14864		15427		15840		15207				15340			
	MON		TUE		WED		THURS		FRI		WK AVG			

PEAK HOUR					TOTAL VEHICALS-PEAK PERIODS		2 HOUR PEAK INTERVALS						
MAX. 7 - 9 am PEAK HOUR	1156	⇒	7.5%	between 8-9 AM	6167	⇒	6 HR TOTAL	2 HR AM (7 - 9 AM)					
MAX. 7 - 11 am PEAK HOUR	1156	⇒	7.5%	between 8-9 AM	4161	⇒	4 HR TOTAL	VEH / HR	VEH / 2HR	2 HR %			
MAX. 11 am - 1 pm PEAK HOUR	1011	⇒	6.6%	between 12-1 PM				7-8 AM	1068	2224	14.5%		
MAX. 11 am - 3 pm PEAK HOUR	1043	⇒	6.8%	between 1-2 PM				8-9 AM	1156				
MAX. 4 - 6 pm PEAK HOUR	1001	⇒	6.5%	between 4-5 PM				2 HR NOON (11 - 1 PM)					
MAX. 3 - 6 pm PEAK HOUR	1041	⇒	6.8%	between 3-4 PM				VEH / HR	VEH / 2HR	2 HR %			
								11-12 PM	996	2006	13.1%		
								12-1 PM	1011				
								2 HR PM (4 - 6 PM)					
								VEH / HR	VEH / 2HR	2 HR %			
								4-5 PM	1001	1938	12.6%		
								5-6 PM	937				

Wilkinson Rd between Carey Rd and Interurban Rd

Westbound

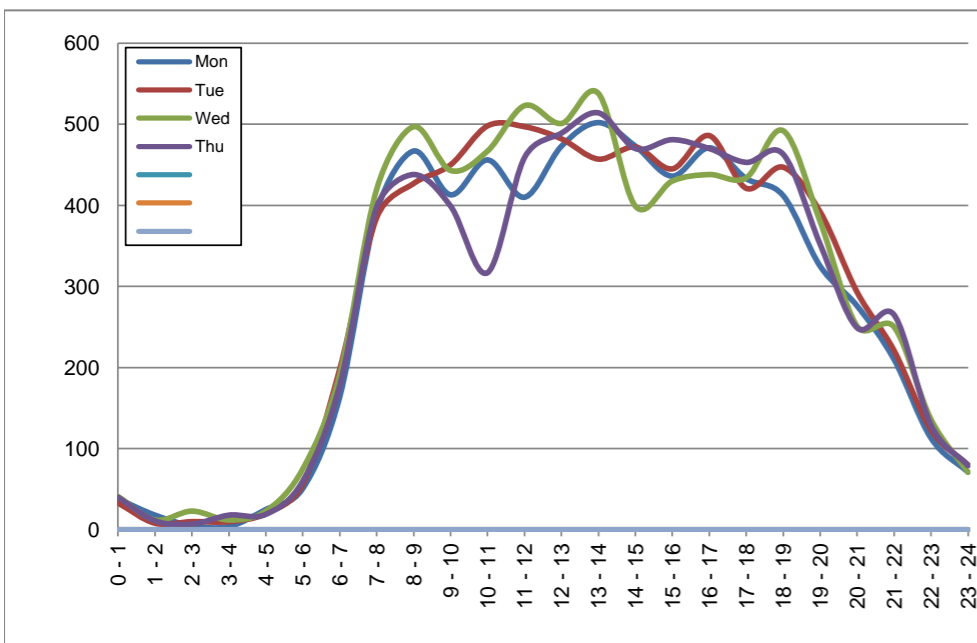
February 24, 2020 to February 27, 2020

Hourly Volumes

Time Period	Mon	Tue	Wed	Thu			
	Feb 24	Feb 25	Feb 26	Feb 27			
0 - 1	38	33	41	40			
1 - 2	18	8	12	11			
2 - 3	5	10	23	7			
3 - 4	4	10	12	18			
4 - 5	25	20	23	19			
5 - 6	51	56	75	60			
6 - 7	164	198	191	178			
7 - 8	392	385	420	398			
8 - 9	467	427	497	438			
9 - 10	413	450	443	399			
10 - 11	456	498	467	317			
11 - 12	410	497	523	459			
12 - 13	473	482	501	489			
13 - 14	502	457	538	514			
14 - 15	473	472	399	470			
15 - 16	436	445	430	481			
16 - 17	471	486	438	470			
17 - 18	433	421	434	453			
18 - 19	412	447	492	463			
19 - 20	325	392	380	352			
20 - 21	276	293	251	249			
21 - 22	210	221	250	265			
22 - 23	113	123	136	129			
23 - 24	71	80	71	79			
Day Total	6638	6911	7047	6758			

15-Minute Volumes

Time Start	Mon	Tue	Wed	Thu				Time Start	Mon	Tue	Wed	Thu			
	Feb 24	Feb 25	Feb 26	Feb 27					Feb 24	Feb 25	Feb 26	Feb 27			
0:00	10	13	14	14				12:00	117	119	124	131			
0:15	14	10	10	9				12:15	122	132	139	119			
0:30	4	7	6	12				12:30	124	98	124	136			
0:45	10	3	11	5				12:45	110	133	114	103			
1:00	8	0	2	1				13:00	114	110	135	141			
1:15	3	2	2	5				13:15	141	107	148	120			
1:30	5	5	4	1				13:30	118	118	122	134			
1:45	2	1	4	4				13:45	129	122	133	119			
2:00	2	2	8	2				14:00	125	129	111	122			
2:15	1	2	5	1				14:15	122	110	109	122			
2:30	1	1	1	0				14:30	119	112	98	110			
2:45	1	5	9	4				14:45	107	121	81	116			
3:00	2	3	3	4				15:00	113	124	111	108			
3:15	1	2	1	6				15:15	111	96	107	141			
3:30	1	3	5	4				15:30	101	111	125	125			
3:45	0	2	3	4				15:45	111	114	87	107			
4:00	1	2	3	1				16:00	112	118	109	127			
4:15	9	2	4	9				16:15	124	109	96	100			
4:30	8	5	9	2				16:30	119	134	122	146			
4:45	7	11	7	7				16:45	116	125	111	97			
5:00	7	9	15	7				17:00	99	118	100	130			
5:15	11	13	13	12				17:15	118	107	122	109			
5:30	10	10	19	19				17:30	105	86	104	121			
5:45	23	24	28	22				17:45	111	110	108	93			
6:00	21	33	35	29				18:00	100	100	117	117			
6:15	37	44	40	36				18:15	104	106	121	121			
6:30	47	56	55	46				18:30	95	106	121	114			
6:45	59	65	61	67				18:45	113	135	133	111			
7:00	82	77	87	92				19:00	107	130	129	109			
7:15	89	105	88	81				19:15	100	100	76	87			
7:30	106	99	112	119				19:30	64	107	92	74			
7:45	115	104	133	106				19:45	54	55	83	82			
8:00	115	115	117	103				20:00	79	54	70	64			
8:15	119	112	145	106				20:15	79	84	66	71			
8:30	111	113	120	105				20:30	70	103	60	54			
8:45	122	87	115	124				20:45	48	52	55	60			
9:00	93	103	100	101				21:00	71	74	91	95			
9:15	111	105	120	137				21:15	54	48	58	64			
9:30	108	118	110	86				21:30	48	49	47	55			
9:45	101	124	113	75				21:45	37	50	54	51			
10:00	112	114	115	76				22:00	40	48	46	41			
10:15	107	146	122	98				22:15	26	22	35	37			
10:30	121	108	102	78				22:30	16	24	27	24			
10:45	116	130	128	65				22:45	31	29	28	27			
11:00	115	137	128	114				23:00	30	26	27	32			
11:15	97	130	128	99				23:15	12	25	18	27			
11:30	103	111	133	128				23:30	20	13	12	13			
11:45	95	119	134	118				23:45	9	16	14	7			



Site notes:

Wilkinson Rd between Carey Rd and Interurban Rd

Eastbound

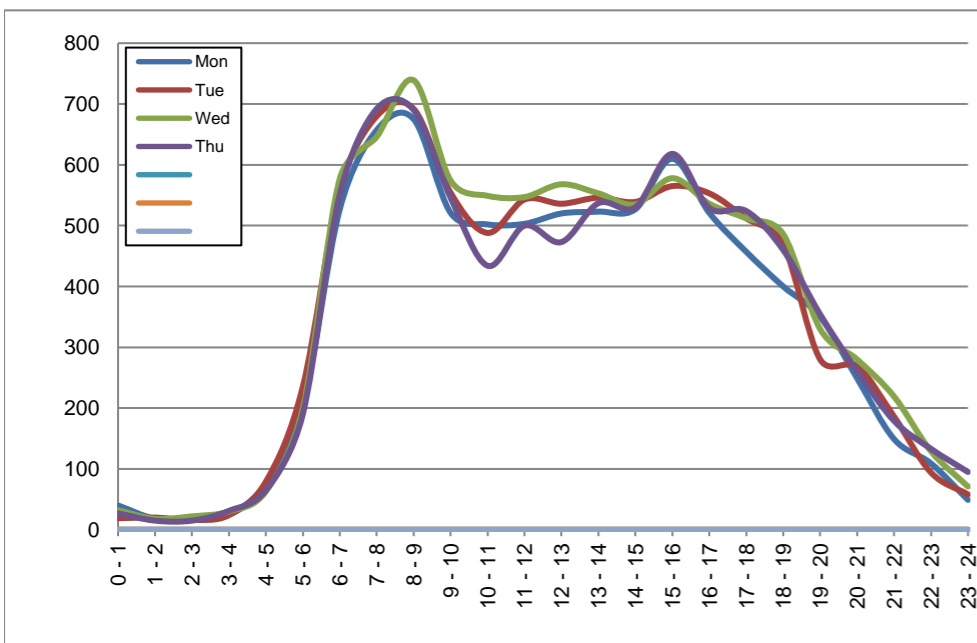
February 24, 2020 to February 27, 2020

Hourly Volumes

Time Period	Mon	Tue	Wed	Thu			
	Feb 24	Feb 25	Feb 26	Feb 27			
0 - 1	40	19	32	27			
1 - 2	18	20	18	15			
2 - 3	16	16	22	15			
3 - 4	25	24	30	31			
4 - 5	76	79	63	65			
5 - 6	202	235	199	190			
6 - 7	527	559	577	551			
7 - 8	657	680	646	692			
8 - 9	675	692	739	690			
9 - 10	521	554	574	546			
10 - 11	502	488	549	434			
11 - 12	503	543	547	500			
12 - 13	520	536	568	473			
13 - 14	523	546	553	537			
14 - 15	527	539	535	530			
15 - 16	610	565	578	618			
16 - 17	521	553	536	529			
17 - 18	457	512	512	524			
18 - 19	400	469	486	460			
19 - 20	350	280	330	354			
20 - 21	249	269	280	261			
21 - 22	149	186	219	179			
22 - 23	109	94	129	133			
23 - 24	49	58	71	95			
Day Total	8226	8516	8793	8449			

15-Minute Volumes

Time Start	Mon	Tue	Wed	Thu				Time Start	Mon	Tue	Wed	Thu			
	Feb 24	Feb 25	Feb 26	Feb 27					Feb 24	Feb 25	Feb 26	Feb 27			
0:00	14	7	11	10				12:00	135	119	117	123			
0:15	13	8	11	2				12:15	132	156	151	125			
0:30	9	3	3	12				12:30	127	135	145	100			
0:45	4	1	7	3				12:45	126	126	155	125			
1:00	5	5	4	6				13:00	132	134	129	128			
1:15	6	3	3	4				13:15	135	125	143	142			
1:30	4	4	7	3				13:30	121	138	142	129			
1:45	3	8	4	2				13:45	135	149	139	138			
2:00	2	2	4	5				14:00	120	110	135	124			
2:15	7	3	6	3				14:15	148	133	123	127			
2:30	2	3	5	4				14:30	113	148	130	122			
2:45	5	8	7	3				14:45	146	148	147	157			
3:00	5	2	3	5				15:00	169	135	156	134			
3:15	7	8	7	7				15:15	150	136	138	158			
3:30	9	7	8	9				15:30	147	156	141	169			
3:45	4	7	12	10				15:45	144	138	143	157			
4:00	10	15	9	11				16:00	151	141	129	134			
4:15	23	21	20	23				16:15	114	126	142	150			
4:30	18	24	17	14				16:30	119	134	131	130			
4:45	25	19	17	17				16:45	137	152	134	115			
5:00	26	31	33	22				17:00	109	125	114	139			
5:15	39	45	37	33				17:15	133	133	126	156			
5:30	60	64	59	65				17:30	113	129	129	117			
5:45	77	95	70	70				17:45	102	125	143	112			
6:00	92	120	122	108				18:00	116	120	127	141			
6:15	125	125	117	135				18:15	110	116	119	97			
6:30	162	170	176	161				18:30	99	135	114	90			
6:45	148	144	162	147				18:45	75	98	126	132			
7:00	144	157	141	158				19:00	93	89	96	113			
7:15	166	175	169	175				19:15	86	81	76	95			
7:30	180	172	153	177				19:30	75	58	80	69			
7:45	167	176	183	182				19:45	96	52	78	77			
8:00	178	185	161	187				20:00	68	73	85	70			
8:15	186	173	177	186				20:15	74	68	62	70			
8:30	139	179	201	158				20:30	51	66	65	66			
8:45	172	155	200	159				20:45	56	62	68	55			
9:00	106	133	150	131				21:00	33	45	49	53			
9:15	145	155	145	138				21:15	47	45	74	48			
9:30	118	124	144	139				21:30	39	56	48	41			
9:45	152	142	135	138				21:45	30	40	48	37			
10:00	134	137	126	96				22:00	33	25	41	37			
10:15	103	122	130	117				22:15	35	24	40	33			
10:30	126	112	145	117				22:30	24	25	25	36			
10:45	139	117	148	104				22:45	17	20	23	27			
11:00	117	128	143	114				23:00	17	24	25	33			
11:15	125	146	149	128				23:15	13	10	16	34			
11:30	130	122	129	110				23:30	10	17	19	8			
11:45	131	147	126	148				23:45	9	7	11	20			



Site notes:

Vehicle Speed Summary

Saanich Engineering Department

Count Id: [M0041-03](#)

Filename: [Wilkinson Rd between Carey Rd and Interurban Rd-Feb-2020.xlsm](#)

Location: Wilkinson Rd between Carey Rd and Interurban Rd

Note:

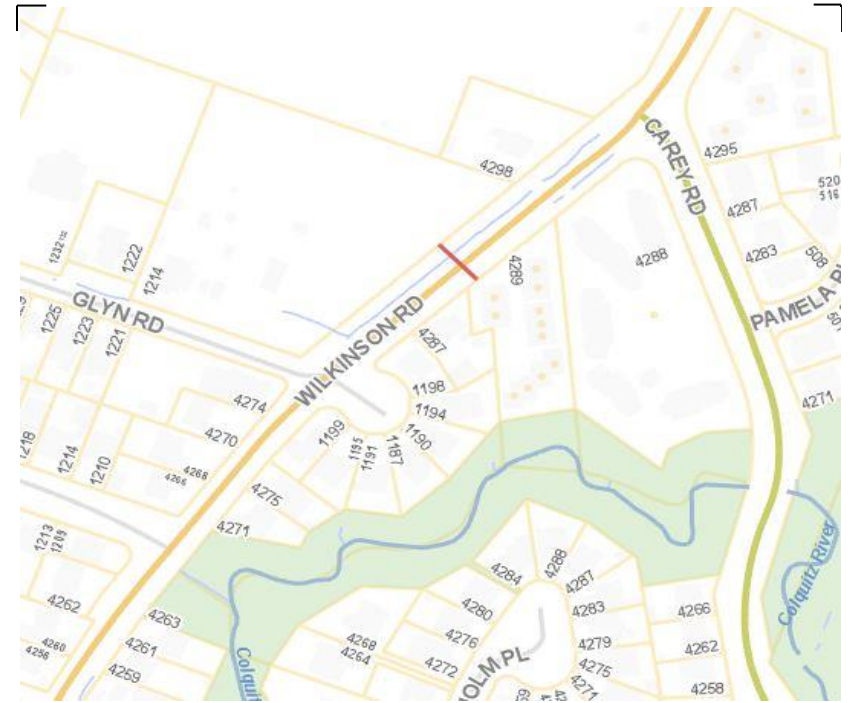
Direction: **East-West**

Dates: **February 24, 2020 To February 28, 2020**

Filtered data

AVG. SPEED	33 mph	54 km/h
50 % SPEED	34 mph	54 km/h
85 % SPEED	38 mph	61 km/h
95 % SPEED	40 mph	65 km/h

Location Map



Wilkinson Rd between Carey Rd and Interurban Rd

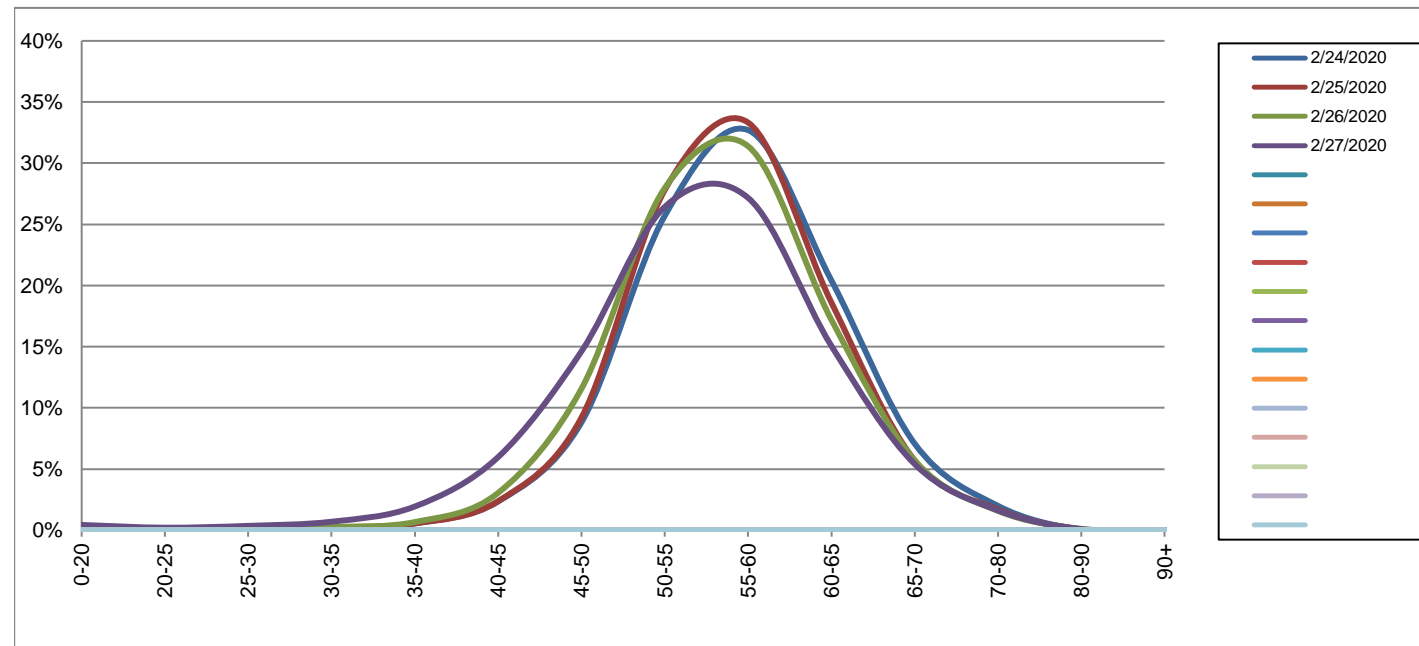
Westbound

February 24, 2020 to February 27, 2020

Daily Speed Bin Percentages														Daily Speed Bin Volumes														Total	Avg.	
Bin #	1	2	3	4	5	6	7	8	9	10	11	12	13	14	1	2	3	4	5	6	7	8	9	10	11	12	13	14	Volume	Speed
Bin Speeds	0-20	20-25	25-30	30-35	35-40	40-45	45-50	50-55	55-60	60-65	65-70	70-80	80-90	90+	0-20	20-25	25-30	30-35	35-40	40-45	45-50	50-55	55-60	60-65	65-70	70-80	80-90	90+		
2/24/2020	0.1%	0.1%	0.1%	0.1%	0.6%	2.4%	8.8%	25.7%	32.7%	20.4%	7.1%	2.0%	0.0%	0.0%	7	5	5	7	37	156	585	1706	2171	1355	469	132	3	0	6638	57
2/25/2020	0.3%	0.0%	0.1%	0.2%	0.5%	2.4%	9.2%	27.8%	33.3%	18.6%	5.7%	1.7%	0.1%	0.0%	20	3	9	14	38	164	636	1922	2303	1286	394	117	4	1	6911	56
2/26/2020	0.4%	0.1%	0.1%	0.3%	0.7%	3.1%	11.6%	28.0%	31.4%	17.2%	5.7%	1.6%	0.1%	0.0%	26	5	5	18	47	215	815	1971	2212	1212	402	111	8	0	7047	56
2/27/2020	0.4%	0.2%	0.4%	0.7%	1.9%	6.0%	14.6%	26.4%	27.2%	15.1%	5.4%	1.6%	0.1%	0.0%	29	14	24	47	131	404	988	1786	1836	1018	365	109	6	1	6758	54
Total	0.3%	0.1%	0.2%	0.3%	0.9%	3.4%	11.1%	27.0%	31.2%	17.8%	6.0%	1.7%	0.1%	0.0%	82	27	43	86	253	939	3024	7385	8522	4871	1630	469	21	2	27354	56

Speed Data Summary

Bin #	1	2	3	4	5	6	7	8	9	10	11	12	13	14	Total
Bin Speeds	0-20	20-25	25-30	30-35	35-40	40-45	45-50	50-55	55-60	60-65	65-70	70-80	80-90	90+	
Survey Total	82	27	43	86	253	939	3024	7385	8522	4871	1630	469	21	2	27354
% Total	0.3%	0.1%	0.2%	0.3%	0.9%	3.4%	11.1%	27.0%	31.2%	17.8%	6.0%	1.7%	0.1%	0.0%	100%
Accumulated %	0.3%	0.4%	0.6%	0.9%	1.8%	5.2%	16.3%	43.3%	74.4%	92.2%	98.2%	99.9%	100.0%	100%	
Inverse Accum. %	99.7%	99.6%	99.4%	99.1%	98.2%	94.8%	83.7%	56.7%	25.6%	7.8%	1.8%	0.1%	0.0%	0.0%	
Average Speed	56 KM/H														



Site notes:

Wilkinson Rd between Carey Rd and Interurban Rd

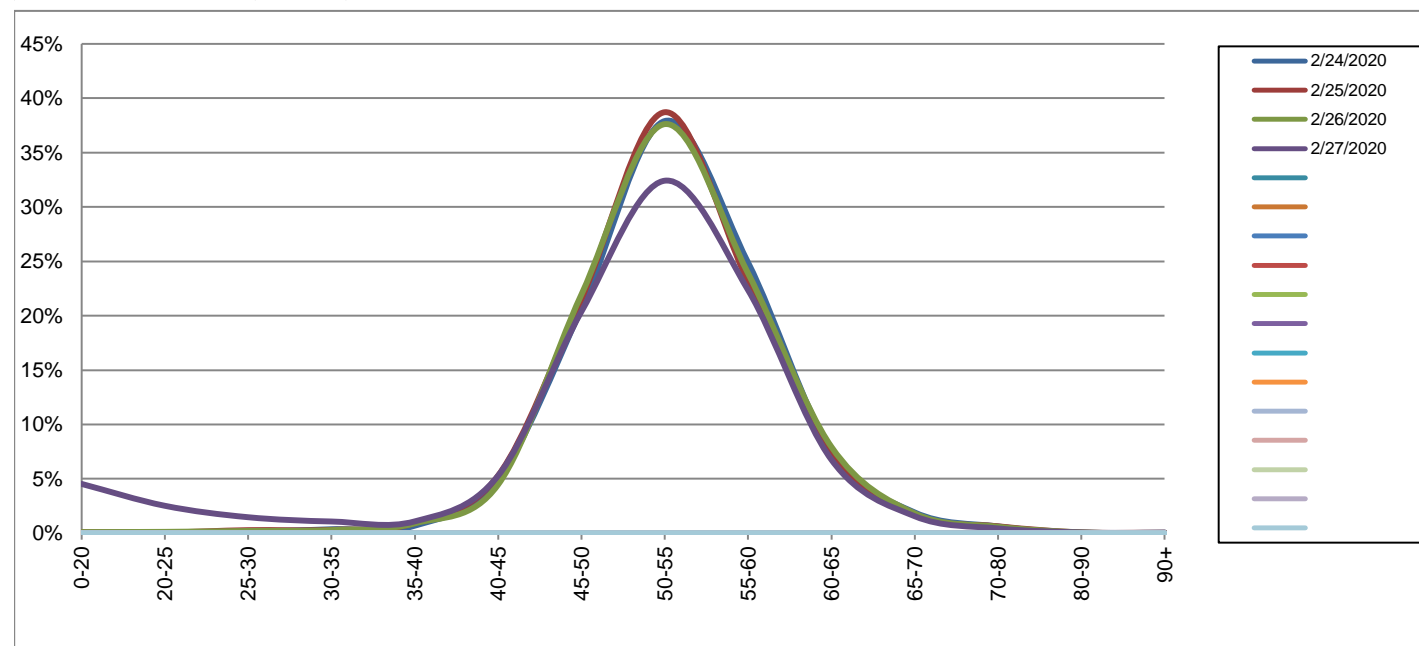
Eastbound

February 24, 2020 to February 27, 2020

Daily Speed Bin Percentages														Daily Speed Bin Volumes														Total	Avg.	
Bin #	1	2	3	4	5	6	7	8	9	10	11	12	13	14	1	2	3	4	5	6	7	8	9	10	11	12	13	14	Volume	Speed
Bin Speeds	0-20	20-25	25-30	30-35	35-40	40-45	45-50	50-55	55-60	60-65	65-70	70-80	80-90	90+	0-20	20-25	25-30	30-35	35-40	40-45	45-50	50-55	55-60	60-65	65-70	70-80	80-90	90+		
2/24/2020	0.1%	0.1%	0.1%	0.4%	0.7%	5.0%	20.6%	37.9%	24.9%	7.6%	1.9%	0.6%	0.0%	0.1%	5	8	12	30	57	413	1697	3118	2047	624	157	51	2	5	8226	53
2/25/2020	0.1%	0.1%	0.3%	0.3%	0.9%	5.3%	21.5%	38.7%	23.1%	7.2%	1.6%	0.6%	0.1%	0.0%	9	6	24	26	80	451	1835	3297	1967	617	140	54	6	4	8516	53
2/26/2020	0.1%	0.1%	0.2%	0.3%	0.9%	4.5%	22.0%	37.6%	23.9%	7.9%	1.8%	0.6%	0.1%	0.0%	9	11	18	25	80	393	1931	3308	2101	698	160	52	7	0	8793	53
2/27/2020	4.5%	2.5%	1.5%	1.1%	1.1%	5.3%	20.4%	32.4%	22.4%	6.8%	1.6%	0.4%	0.1%	0.0%	383	213	124	91	92	447	1723	2739	1889	571	132	37	6	2	8449	50
Total	1.2%	0.7%	0.5%	0.5%	0.9%	5.0%	21.1%	36.7%	23.6%	7.4%	1.7%	0.6%	0.1%	0.0%	406	238	178	172	309	1704	7186	12462	8004	2510	589	194	21	11	33984	52

Speed Data Summary

Bin #	1	2	3	4	5	6	7	8	9	10	11	12	13	14	Total
Bin Speeds	0-20	20-25	25-30	30-35	35-40	40-45	45-50	50-55	55-60	60-65	65-70	70-80	80-90	90+	
Survey Total	406	238	178	172	309	1704	7186	12462	8004	2510	589	194	21	33984	
% Total	1.2%	0.7%	0.5%	0.5%	0.9%	5.0%	21.1%	36.7%	23.6%	7.4%	1.7%	0.6%	0.1%	0.0%	100%
Accumulated %	1.2%	1.9%	2.4%	2.9%	3.8%	8.8%	30.0%	66.7%	90.2%	97.6%	99.3%	99.9%	100.0%	100%	
Inverse Accum. %	98.8%	98.1%	97.6%	97.1%	96.2%	91.2%	70.0%	33.3%	9.8%	2.4%	0.7%	0.1%	0.0%	0.0%	
Average Speed	52 KM/H														



Site notes:

Wilkinson Rd between Carey Rd and Interurban Rd

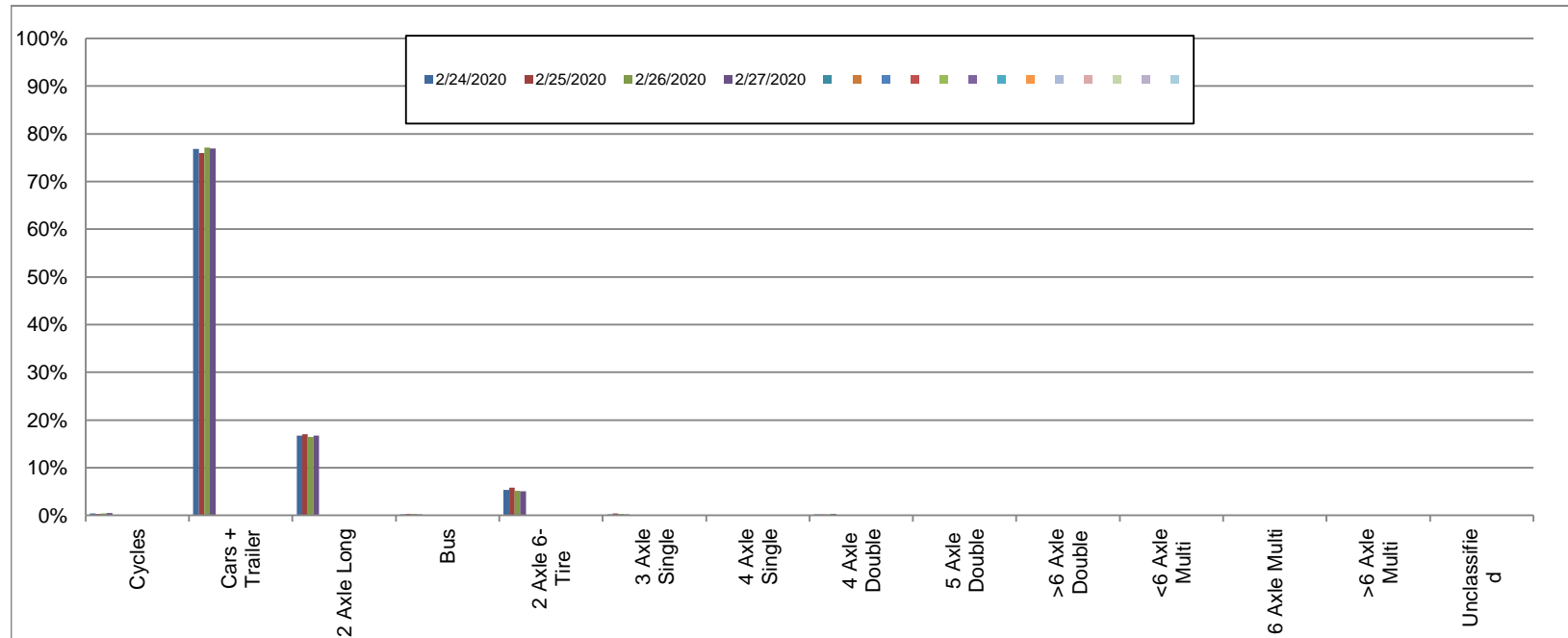
Westbound

February 24, 2020 to February 27, 2020

Daily Class Bin Percentages															Daily Class Bin Volumes											Total Volume				
Bin #	1	2	3	4	5	6	7	8	9	10	11	12	13	14	1	2	3	4	5	6	7	8	9	10	11		12	13	14	
Bin Class	Cycles	Cars + Trailer	2 Axle Long	Bus	2 Axle 6-Tire	3 Axle Single	4 Axle Single	4 Axle Double	5 Axle Double	>6 Axle Double	<6 Axle Multi	6 Axle Multi	>6 Axle Multi	Unclassified	Cycles	Cars + Trailer	2 Axle Long	Bus	2 Axle 6-Tire	3 Axle Single	4 Axle Single	4 Axle Double	5 Axle Double	>6 Axle Double	<6 Axle Multi	6 Axle Multi	>6 Axle Multi	Unclassified		
2/24/2020	0.4%	76.8%	16.8%	0.2%	5.3%	0.2%	0.0%	0.2%	0.0%	0.0%	0.0%	0.0%	0.0%	0.0%	26	5101	1113	16	352	11	0	16	1	0	0	0	0	0	2	6638
2/25/2020	0.3%	76.0%	17.0%	0.3%	5.8%	0.4%	0.0%	0.2%	0.0%	0.0%	0.0%	0.0%	0.0%	0.0%	22	5252	1174	18	400	26	0	15	1	0	0	0	0	0	3	6911
2/26/2020	0.4%	77.2%	16.4%	0.3%	5.1%	0.3%	0.0%	0.2%	0.0%	0.0%	0.0%	0.0%	0.0%	0.0%	30	5437	1158	20	361	22	0	13	2	1	0	0	0	0	3	7047
2/27/2020	0.5%	76.9%	16.7%	0.2%	5.0%	0.2%	0.0%	0.3%	0.0%	0.0%	0.0%	0.0%	0.0%	0.0%	34	5200	1128	15	341	15	2	22	0	0	0	0	0	0	1	6758
Total	0.4%	76.7%	16.7%	0.3%	5.3%	0.3%	0.0%	0.2%	0.0%	0.0%	0.0%	0.0%	0.0%	0.0%	112	20990	4573	69	1454	74	2	66	4	1	0	0	0	9	27354	

Class Data Summary

Bin #	1	2	3	4	5	6	7	8	9	10	11	12	13	14	Total Volume
Bin Class	Cycles	Cars + Trailer	2 Axle Long	Bus	2 Axle 6-Tire	3 Axle Single	4 Axle Single	4 Axle Double	5 Axle Double	>6 Axle Double	<6 Axle Multi	6 Axle Multi	>6 Axle Multi	Unclassified	Total Volume
Survey Total	112	20990	4573	69	1454	74	2	66	4	1	0	0	0	9	27354
% Total	0.4%	76.7%	16.7%	0.3%	5.3%	0.3%	0.0%	0.2%	0.0%	0.0%	0.0%	0.0%	0.0%	0.0%	100%
Accumulated %	0.4%	77.1%	93.9%	94.1%	99.4%	99.7%	99.7%	99.9%	100.0%	100.0%	100.0%	100.0%	100.0%	100.0%	
Inv. Accum. %	99.6%	22.9%	6.1%	5.9%	0.6%	0.3%	0.3%	0.1%	0.0%	0.0%	0.0%	0.0%	0.0%	0.0%	



Classification Descriptions

Bin #	Bin Description
1	Motorcycles
2	Passenger cars, including those with recreational trailers
3	2-axle pick-ups, vans, and RVs, including those with recreational trailers
4	Buses
5	2-axle, 6-tire single units
6	3-axle single units
7	4-axle single units
8	3-axle or 4-axle double unit
9	5-axle double unit
10	6-, 7-, or 8-axle double unit
11	5-axle multiple unit
12	6-axle multiple unit
13	7-or-more-axle multiple unit
14	Vehicles that could not be classified

Site notes:

Wilkinson Rd between Carey Rd and Interurban Rd

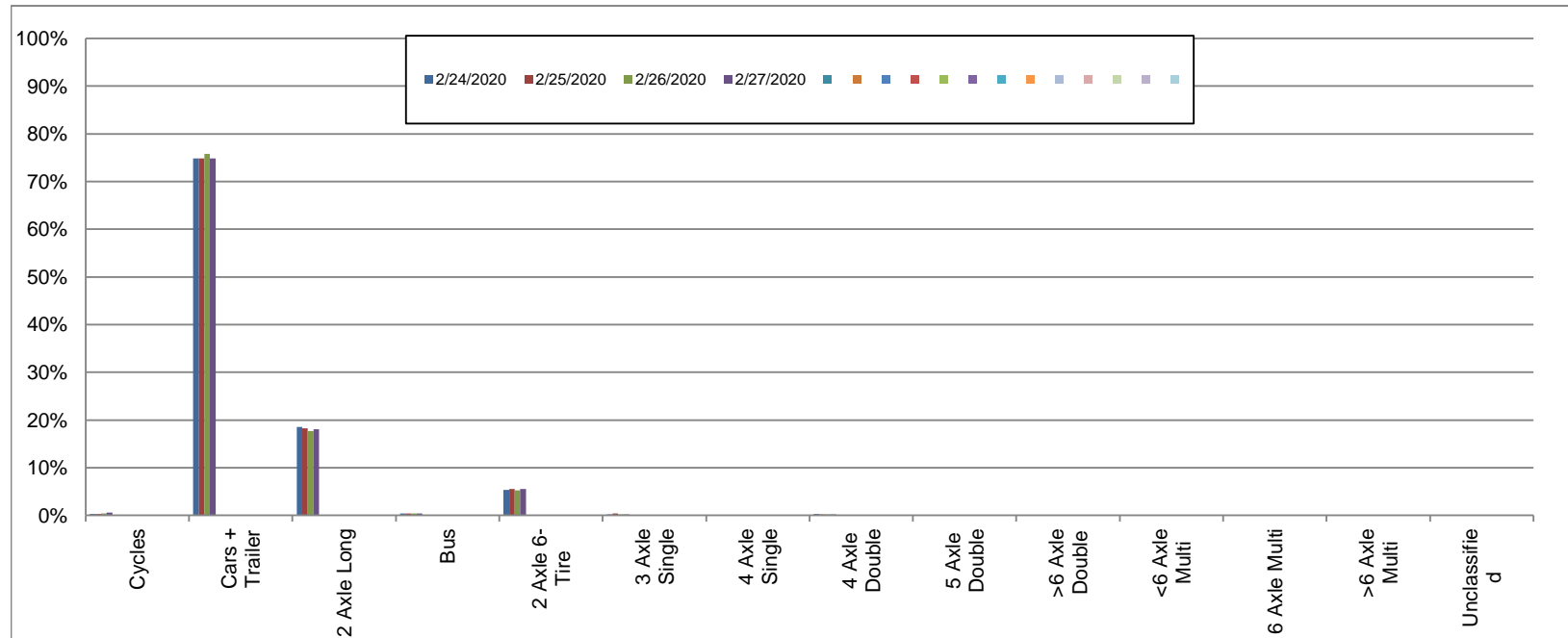
Eastbound

February 24, 2020 to February 27, 2020

Daily Class Bin Percentages															Daily Class Bin Volumes														
Bin #	1	2	3	4	5	6	7	8	9	10	11	12	13	14	1	2	3	4	5	6	7	8	9	10	11	12	13	14	Total Volume
Bin Class	Cycles	Cars + Trailer	2 Axle Long	Bus	2 Axle 6-Tire	3 Axle Single	4 Axle Single	4 Axle Double	5 Axle Double	>6 Axle Double	<6 Axle Multi	6 Axle Multi	>6 Axle Multi	Unclassified	Cycles	Cars + Trailer	2 Axle Long	Bus	2 Axle 6-Tire	3 Axle Single	4 Axle Single	4 Axle Double	5 Axle Double	>6 Axle Double	<6 Axle Multi	6 Axle Multi	>6 Axle Multi	Unclassified	
2/24/2020	0.3%	74.9%	18.5%	0.4%	5.3%	0.2%	0.0%	0.3%	0.0%	0.0%	0.0%	0.0%	0.0%	0.0%	28	6158	1521	36	439	16	0	21	4	1	0	0	0	2	8226
2/25/2020	0.3%	74.9%	18.3%	0.4%	5.5%	0.4%	0.0%	0.2%	0.0%	0.0%	0.0%	0.0%	0.0%	0.0%	22	6377	1558	34	471	30	0	17	3	0	0	0	0	4	8516
2/26/2020	0.4%	75.8%	17.7%	0.4%	5.3%	0.2%	0.0%	0.2%	0.0%	0.0%	0.0%	0.0%	0.0%	0.0%	34	6666	1558	33	463	19	1	16	0	0	0	0	0	3	8793
2/27/2020	0.5%	74.9%	18.1%	0.4%	5.5%	0.2%	0.0%	0.2%	0.0%	0.0%	0.0%	0.0%	0.0%	0.1%	46	6325	1528	32	464	20	0	20	2	0	0	0	1	11	8449
Total	0.4%	75.1%	18.1%	0.4%	5.4%	0.3%	0.0%	0.2%	0.0%	0.0%	0.0%	0.0%	0.0%	0.1%	130	25526	6165	135	1837	85	1	74	9	1	0	0	1	20	33984

Class Data Summary

Bin #	1	2	3	4	5	6	7	8	9	10	11	12	13	14	Total Volume
Bin Class	Cycles	Cars + Trailer	2 Axle Long	Bus	2 Axle 6-Tire	3 Axle Single	4 Axle Single	4 Axle Double	5 Axle Double	>6 Axle Double	<6 Axle Multi	6 Axle Multi	>6 Axle Multi	Unclassified	Total Volume
Survey Total	130	25526	6165	135	1837	85	1	74	9	1	0	0	1	20	33984
% Total	0.4%	75.1%	18.1%	0.4%	5.4%	0.3%	0.0%	0.2%	0.0%	0.0%	0.0%	0.0%	0.0%	0.1%	100%
Accumulated %	0.4%	75.5%	93.6%	94.0%	99.4%	99.7%	99.7%	99.9%	99.9%	99.9%	99.9%	99.9%	99.9%	100.0%	
Inv. Accum. %	99.6%	24.5%	6.4%	6.0%	0.6%	0.3%	0.3%	0.1%	0.1%	0.1%	0.1%	0.1%	0.1%	0.0%	



Classification Descriptions

Bin #	Bin Description
1	Motorcycles
2	Passenger cars, including those with recreational trailers
3	2-axle pick-ups, vans, and RVs, including those with recreational trailers
4	Buses
5	2-axle, 6-tire single units
6	3-axle single units
7	4-axle single units
8	3-axle or 4-axle double unit
9	5-axle double unit
10	6-, 7-, or 8-axle double unit
11	5-axle multiple unit
12	6-axle multiple unit
13	7-or-more-axle multiple unit
14	Vehicles that could not be classified

Site notes: